

News

JULY Newsletter | 2005

You can use

A Publication for clients of Tomlinson Bomberger Lawn Care & Landscape, Inc. | 717-399-1991 | www.tbll.com | Editor: Beth Tomlinson



HOT TOPICS...DURING SUMMER MONTHS

BY MIKE DAVIS

Must-do... Mowing Measures



by:
"Benny the Blade"

- Mow grass at 3 inches
- Use sharp mower blades
- Clean mower deck often
- Return nutrients to the soil by mulching every other mowing.
- Always wear shoes and eye protection while mowing.
- Get your soil tested every 3 to 5 years to assess soil nutrient levels

 **TOMLINSON BOMBERGER**
LAWN CARE & LANDSCAPE, INC.

As the summer heats up, so does **INSECT ACTIVITY** around your home. Spiders, Ants, Centipedes, Wasps, and Earwigs are out building nest areas around the foundation and in the eaves of the house. Ants in the dining room or centipedes in your laundry basket are mostly considered a nuisance, but if you've ever had the displeasure of being stung by a wasp, or suffered a spider bite, then you know these critters can be a serious problem. Here are some tips to keep pests out of your home:

If you must store firewood near your home, stack it off the ground and don't allow it to lean against the building. Control moisture problems by making sure gutters and downspouts are clear of debris. Water from downspouts should be channeled away from your foundation. Repair leaking pipes and don't aim sprinklers against your house. Slope soil away from your house. Trim shrubbery away from vents. Prune trees to create clearance from your home, especially the roof.

Tomlinson Bomberger offers help to keep your home pest-free! Treating the foundation area around your home as well as the eaves, window sills, and doorways will help block the entry points of pests into your home. By creating a barrier between your home and the potential invaders, you will enjoy a more pest-free living environment. Call today and ask for more details about our *Home Invader Pest Control Service*.



Earwig



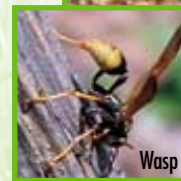
Spider



Centipede



Ant



Wasp

DROUGHT CONDITIONS are prevalent throughout our service area. New planting and lawn areas are especially prone to wilting and heat damage. New planting would include everything planted since 2001. Please set your soaker hoses and sprinklers to provide a slow deep watering of plants and lawn areas at risk. Wilting in plants is easily identified by droopy leaves. Drought stress in lawns is characterized by blades turning tan and yellow. If you walk across your lawn and look back over your footsteps and the grass has not sprung back upright, your lawn is in drought stress.

A MESSAGE FROM THE GENERAL MANAGER

Life is cyclical. Everything that lives, including communities of living things like lawns, forests or businesses, must experience change. In Ecclesiastes 3:1-8, we learn that in order for goodness to be appreciated, there must be times of opposite perspective. Change can be difficult but it is inevitable and necessary to complete the cycle of life. Everything that lives must change continually to remain vibrant, or at least, to remain alive. People, plants, trees, turfgrass, insects, animals, companies, organizations, governments, churches, etc. require change to remain alive. Change requires effort. Change yields results.

I would like to thank every coworker of Tomlinson Bomberger for their efforts during the many changes we are enduring. It takes concentration, commitment and energy to change, and we have witnessed great effort from our work force.

A sincere thank you is also extended to all of our clients for patience and understanding during this season of change for Tomlinson Bomberger. We have moved our operations, hired new coworkers, added services, utilized new equipment and incorporated new techniques to improve the appearance of your landscape. You can bet that we will continue to challenge our assumptions in our effort to provide quality service and beautiful landscapes.

Tom Shotzbarger
General Manager

CLIENT FEEDBACK

"The mulching job was the best we've ever had done; it has completely transformed our yard. Thank you so much!"

Louis & Carole Jennings, Millersville, PA

"I was very satisfied with all those involved in the work. From the initial contact to the final product, the men that actually did the installation were hard working, professional and courteous."

Gary Rhodes, Denver, PA



Matt Fulmer joined Tomlinson Bomberger in 2004 with 18 years of experience in the landscape industry. Knowledgeable in all aspects of landscaping, Matt currently serves our clients in the areas of grading, seeding, landscape installation, athletic field renovation, hardscaping and all maintenance operations. Matt also helps supervise commercial account operations. Matt coaches boys basketball at Lancaster Catholic High School, and enjoys golfing.

CHECK IT OUT...



Tomlinson Bomberger has teamed up with WGAL TV-8 to introduce the newest area of the Channel 8 web site **TheWGALChannel.com** called "Local Experts." Click on the tab at the top of their site to be linked with our company and other leading experts for various industries in the Susquehanna Valley.

 printed on recycled paper

PRSRT STD
U.S. POSTAGE
PAID
LANCASTER, PA
PERMIT NO. 472

3055 Yellow Goose Road, Lancaster, PA 17601
Call (717) 399-1991 or log on to www.tbll.com
Maintaining your lawn & landscape as our own.

TOMLINSON BOMBERGER
LAWN CARE & LANDSCAPE, INC.

