



Tree Services Update

by: Tom Shotzbarger

Here's something that looks different - Tomlinson Bomberger Tree Care Service.

No, we haven't changed our name, but we want you to know that we offer all of the services associated with trees (large and small), shrubs, bushes, hedges, vines and any other green vegetation.

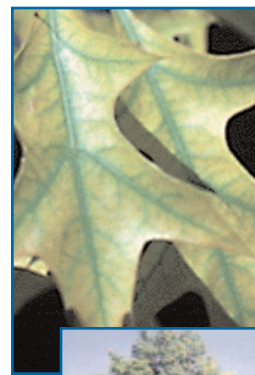
Our professional services include:

- * Pruning, Thinning, Trimming, Shearing and Removal
- * Planting, Transplanting and Mulching
- * Diagnosis and treatment for insects, mites and diseases
- * Spraying, Specialty Treatments and Fertilizing

We have added four trucks to our fleet, all designed for specialty tree care operations. We can now treat large trees up to 80 feet tall. We have joined the National Arborist Association, NAA, an organization of professional tree care providers. We have hired another experienced and licensed applicator, Jim Weidman, who, along with our seasoned veterans, Dan White and Gary Lockard, will be providing many of your tree care services. We have two Certified Arborists on Staff: Bob Leabhart and Tom Shotzbarger. Our service offering has expanded with a few new treatments designed to better meet your needs. We have started an in-house training program that will promote the most current practices in arboriculture.

Our upgrades will provide better service to meet the changing needs of your landscape. Landscape problems like Bacterial Leaf Scorch, Iron Chlorosis, drought stress and decline of mature trees are just a few of the situations that we are prepared to address. We are more than a lawn care and landscape company. We are ready to be your *total tree care company*, answer your questions, and provide the professional service you expect and deserve.

Printed on recycled paper



Iron Deficiency in Plants

by: Bob Mentzer

A common problem in landscapes we maintain is a condition called Iron Chlorosis. This malady is the result of deficient levels of iron in the affected plants. It can affect trees, shrubs, perennials and groundcover plants. The leaves turn yellow while the veins remain deep green. Left untreated, the plants will continue to decline as the leaves turn whitish and develop brown and black spots. The outcome for plants suffering ongoing chlorosis is a slow death. To solve this problem, additional iron must be added to the soil so that the plants can absorb it. Iron is applied as a liquid, a tablet or powder. Corrective treatments will restore iron levels & begin the healing process.



Some plants commonly affected by Iron Chlorosis are Pin Oaks, Willow Oaks, White Pines, Hemlocks, Magnolias, Hollies, Rhododendrons, Azaleas, Boxwoods and others. If you notice yellowing or other unusual signs throughout your landscape, please call to have one of our representatives inspect your property and provide recommendations.

Check out our website

www.tbll.com

Visit our website at www.tbll.com to discover all of the services that Tomlinson Bomberger Lawn Care & Landscape offers. You'll find a *Lawn Care Calendar* that describes what your property needs during the year, as well as a description of the professional services we offer.

NEWS You Can Use

Volume 3 • Issue 1

Spring 2002

A Publication Exclusively for Customers of Tomlinson Bomberger Lawn Care & Landscape, Inc.

EDITOR: BOB LEABHART

LAYOUT/DESIGN: BARRY BRUCE & COMPANY

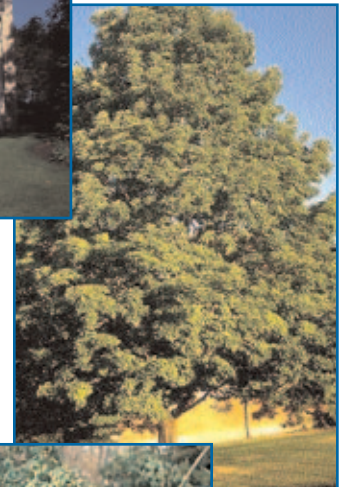
MANAGING YOUR LAWN & LANDSCAPE DURING A DROUGHT

by: Bob Kandratavich

The Lawn

Even though watering restrictions are in place, there are several important things you can do to help your lawn withstand dry weather:

- 1) Look at your lawn to determine when to mow. Wait until the lawn grows 1/3 higher than the 2.5" - 3.0" mowing height.
- 2) Vary mowing direction.
- 3) Keep mower blades sharp to reduce additional stress.
- 4) Mow late in the day to allow lawn to recover before being exposed to additional wind & sun exposure.



Consider the existing grass type and make sure the right grass is in the right place. Sun tolerant grasses placed in the shade such as bluegrass and ryegrass often soften during droughts because they are already stressed. Changing these types to fine fescue (a drought-tolerant shade grass type) is recommended. An alternative for sun areas is a turf-type tall fescue. It has a deeper root system and holds up better during dry conditions. Seeding in the Fall is the best time to make changes.



The Landscape

Retaining moisture is a key to maintaining plant health. Proper mulching is critical. Two to three inches of a premium grade mulch provides protection and helps retain soil moisture.

Plant competition may also affect the landscape during a drought. Ground covers & shrubs planted in close proximity cause competition for moisture resulting in decline. Keep shrubs & ground covers clear of each other.

Evaluate plant variation for site adaptability. Make sure plants in drought-prone areas, such as Southern facing slopes are hardy and drought-tolerant. Some shrubs & trees that tolerate dry sites are:

Shrubs

- Barberry
- Cotoneaster
- Potentilla
- Spirea
- Many Lilacs & Viburnum
- Witch Hazel

Trees

- Crabapple
- Ginkgo
- Honey Locust
- Ornamental Pear
- Scarlet Oak
- Zelkova

Many problems in the lawn and landscape are a result of plants in the wrong location. When in doubt, consult a professional before making a choice.

INSIDE THIS ISSUE

Drought Management.....	1
General Manager's Message.....	2
Plant Profile.....	2
Company News.....	3
Weed Control Improvements.....	3
Tree Services Update.....	4
Iron Deficiency.....	4
TBLL Website.....	4

Better. For the good Earth ... Naturally.

711 CATHERINE STREET, LANCASTER, PA 17603

TOMLINSON BOMBERGER LAWN CARE & LANDSCAPE, INC.



PRSRRT STD
U.S. POSTAGE
PAID
LANCASTER, PA
PERMIT NO. 472

General Manager's Message

by: Tom Shotzbarger

In my first message as General Manager, I want to thank Clark Tomlinson and Dave Bomberger for bringing me on board. It is a pleasure and honor to help direct the changes that are occurring at Tomlinson Bomberger, and we're having fun doing it. What a great group of people! I'm not surprised that success has accompanied their efforts for the past 21 years. Let me share with you what we are doing to add to that success.

We are expanding and improving operations. We are implementing new accountability measures. We are making progress in improving our management practices. Since last fall, we've hired nine new employees and retained 93 percent of our existing coworkers. We've purchased 8 trucks that create better flexibility in meeting our clients' needs. We've expanded our existing facilities, and we are searching for a new site that will position us to pursue further growth and expansion.

Even though I mention these things, it's not really about us. All of this activity is for you, our clients. We are blessed and fortunate to have over 4,200 lawns and landscapes under our care. Our sincere interest is in helping you improve and maintain the health and appearance of your trees, shrubs, lawn and landscape plantings.

In addition to 20+ years of experience in the lawn care and landscape industry, our knowledgeable co-workers have the credentials to provide professional service. With college degrees in Agronomy, Horticulture and Landscape Design, as well as having Certified Horticulturists, Certified Arborists and a Certified Landscaper, we strive to provide services that you will appreciate. Our memberships and participation in professional organizations help keep us informed about current practices and advancements in the green industry. In our efforts to continuously improve, we remain mindful of providing more and better benefits to our clients.

With that in mind, I invite you to call. Whether you have a question, compliment, challenge, concern, or complaint (yes, we get a few of these too), please call us. Our commitment is to respond promptly and professionally.

2. Have a spectacular Spring!



Plant Profile: 'Forest Pansy' Rebud

by: Don Becker



Spring is here and one of April's finest small flowering trees is the 'Forest Pansy' Eastern Redbud, *Cercis canadensis* 'Forest Pansy'.

A hybrid of the Native Eastern Redbud, this small flowering tree with clusters of magenta colored buds that open up to a blanket of pea-like rosy-pink flowers, has no equal during the Spring.

A deciduous tree 20' tall and 25' wide at maturity, it has horizontally tiered reddish-brown branches. After flowering subsides, the tree becomes covered with 3-5" heart-shaped glossy red-purple leaves that fade to maroon as they mature and become purple-green in summer. Fall color may be a mixture of green, red, orange, and yellow. Two inch to four inch seedpods appear in Summer and persist into Fall. This tree is adaptable to acidic, moist or dry soils.

Redbuds are native to most of the Eastern United States and their colorful display in the spring is anticipated by all.

Try one in your landscape today!



"Forest Pansy" Rebud

Weed Control Improvements

by: Bob Leabhart

Of all the battles we face each year to keep a lawn healthy, whether insects, diseases or lack of much-needed water, weeds are found to be one of the most significant challenges every year. According to weed and soil scientists, an average cubic foot of soil may contain 10,000 weed seeds.

Therefore, a plan early in the Spring is needed to attack the viable seeds when the environmental conditions are ripe for their germination. This plan should consist of a pre-emergent herbicide application applied early in the Spring, followed up by post-emergent applications once weeds have germinated.

Crabgrass is one of the more prevalent weeds in our area, and there are many theories on the best way to economically control it. Over the years we used different types of products to obtain season-long control, and have even looked into doing split applications to ensure the best control possible going into late Summer. Although somewhat effective, we found it hard to manage, and more costly to implement.

The product we primarily rely on is *Dimension*. It is the first herbicide to have both pre-emergence and post-emergence effects on annual grass weeds like crabgrass. Although the post-emergent activity is limited to the early stages of weed development, it does provide the extra protection that is needed if a late Spring application is performed. While



Crabgrass

other products may break down during the Summer, *Dimension* will continue to work through the Summer. One application in the Spring will provide the amount of control needed. Spring seeding can be done in April, and then a follow-up application of *Dimension* in early June will provide crabgrass control through the Summer.

A pre-emergent application is an important aspect of the lawn care program because the turf density hasn't developed early in the Spring.

Problems develop when small gaps exist in the turf, which create the opportunity for weeds to germinate and grow. Fertilization early in the Spring, along with a pre-emergent herbicide, can reduce or eliminate those chances of occurring.

Once weeds become established in a lawn, the method of attacking them switches to a post-emergent operation. Even though the best defense against a weed invasion is a thick and growing turf to choke out intrusive weeds, a post-emergent herbicide is recommended when primarily broadleaf weeds, which aren't controlled by the traditional pre-emergent herbicides, decide to take up residence in your lawn.

Good cultural practices are important with any lawn care program. Weeds have a hard time infiltrating a lawn that is properly fertilized and mowed at the correct height and frequency. Weeds will appear in thin or bare spots that may be due to insect or disease damage, or poor cultural practices.

By adhering to a fertility program in the beginning of the year, and by mowing at the correct height and frequency, you will significantly increase your turf's competition with weeds. This will also increase the effectiveness of the weed control program, which will improve the appearance and health of your lawn.

Tomlinson Bomberger Hires General Manager



Tom Shotzbarger

Clark Tomlinson and Dave Bomberger announce the hiring of Tom Shotzbarger as General Manager. Shotzbarger's responsibilities include the overall supervision of operations with special focus on establishing standard operating procedures, coordinating all technical training and developing strategies for growth.

Shotzbarger most recently was general manager for McFarland Tree & Landscape Services in Philadelphia. His green industry career began with mowing lawns in Philadelphia during summers while in college. Over the past 29 years, Shotzbarger has developed a broad base of experience having worked in garden centers, nurseries, landscape maintenance and installation operations, and tree care companies. He also enjoyed a stint as a part-time college instructor in horticulture and landscape maintenance. Current credentials include Licensed Pesticide Applicator, Licensed Tree Expert, Certified Arborist, Certified Horticulturist and Certified Landscape Technician. To complement his technical background in the green industry, Shotzbarger has a B.S. degree in Organizational Behavior from Albright College.

A resident of Temple, Pennsylvania, Shotzbarger resides with his wife, Joni and their daughter, Jillian, a freshman at Muhlenberg High School. Their oldest daughter, Katie graduated from Haverford College and resides in Boston. Julie, their middle daughter, graduated from the University of Notre Dame and is studying at Ave Maria School of Law in Ann Arbor.